



MRI/US Fusion, Semi Robotic, TRUS & TP
PET/CT Fusion. Targeted Biopsy
Focal Therapy Planning & Monitoring
Computer Aided Detection

Advanced 3D Imaging ProFuse - CAD



Computer Aided Detection

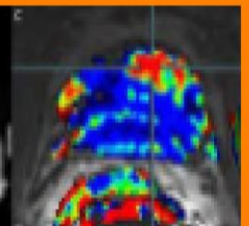
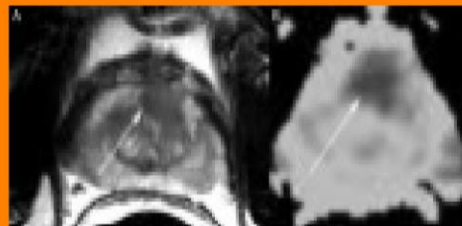
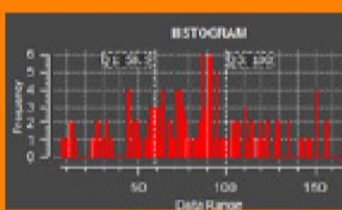
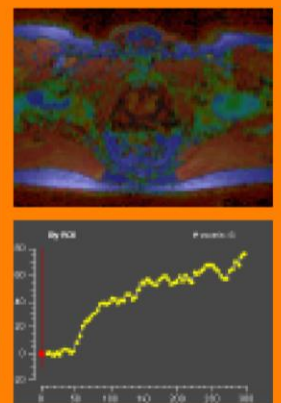
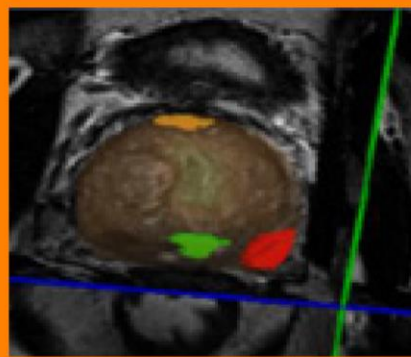
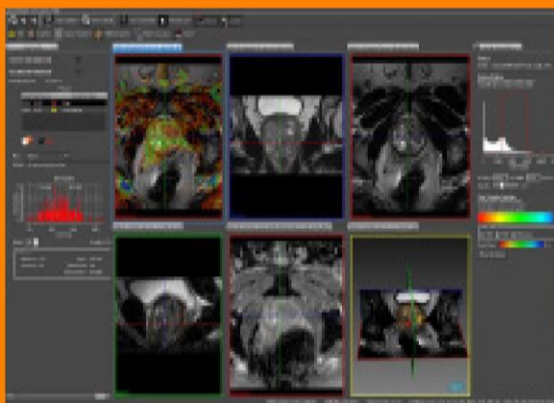
Assist radiologists to detect ROI on MRI

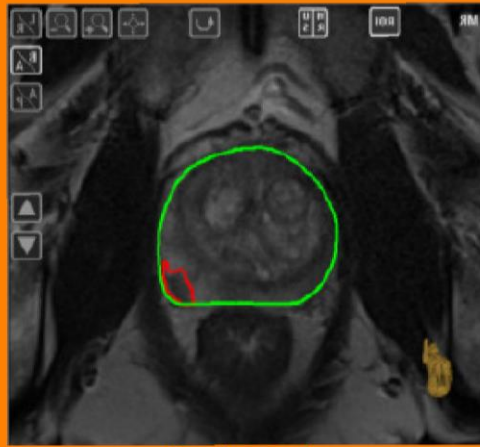
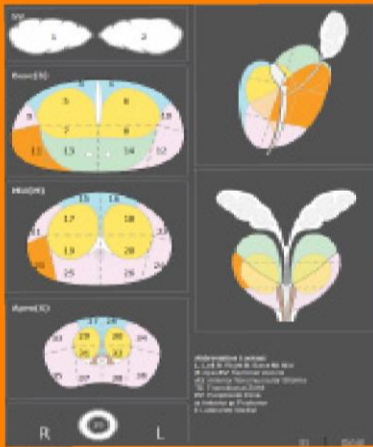
Auto Segment Prostate

Auto PI-RADS classification of ROI

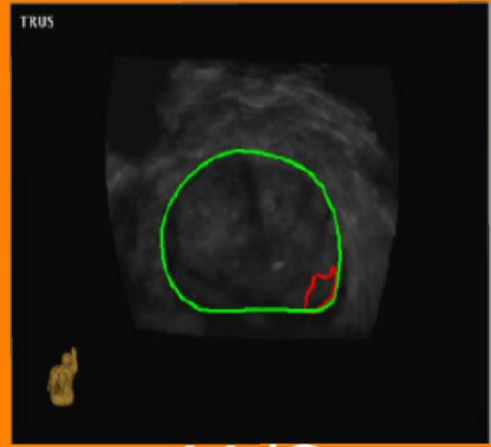
Server Based, Multi user (<5 min).

- Identify & confirm potential prostate MR lesions for biopsy
- It allows advanced calculation to confirm lesion grading
- Mark regions of interest for biopsy procedures





MRI



U/S

Supports PET/CT/MRI/US Fusion
Automatic Rigid & Elastic Fusion
Auto PIRADS Scoring & Reporting



Real-time 3D Needle Visualization
& Pathology Recording

Patient Motion Compensation
Unique to Artemis



TRANSRECTAL



TRANSPERINEAL
Semi Robotic
No-Grid

Both forms of Bx either under
Local Anesthetic or
General



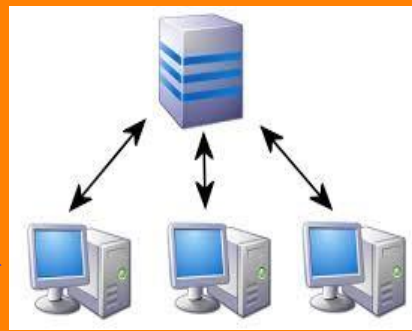
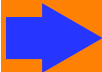
Hospital or
Clinic



3T or 1.5T



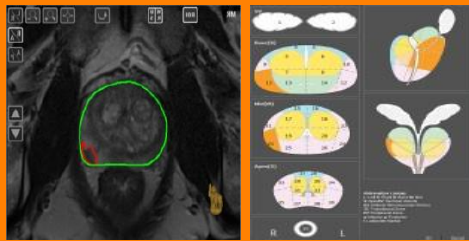
PACS



ProFuse



ProFuse FT Focal Therapy



TP



TRUS



U/S Image

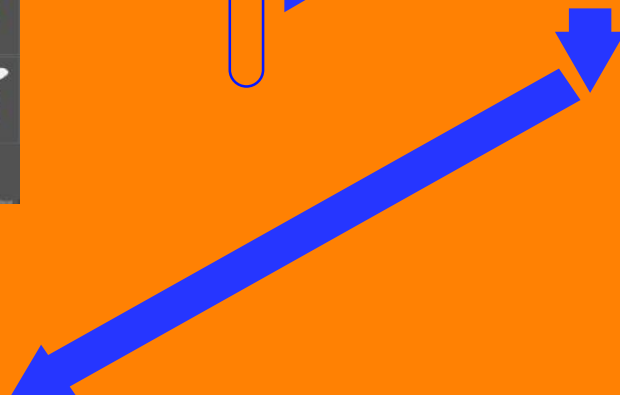
Rigid Registration

Elastic Fusion

Navigation

Biopsy

Pathology Cores





World-class customer support and service



FDA, CE, TGA, Cleared
www.eigen.com

U.S. Headquarters: 13366 Grass Valley Ave.
Grass Valley, CA 95945
U.S.A.

Over 18 Years in clinical use in
34 countries around the world

Ph: + 1 530 274 1240 x 221
Fax: + 1 530 274 3656